

LUXURY
Yacht
GROUP
PRESENTS FOR SALE



SOLEMATES

A Truly Exceptional Yacht for a Highly Discerning Owner



118' LENGTH



6.5' DRAFT



10 GUESTS



5 CABINS



6 CREW

SPECIFICATIONS

BUILDER: Mulder Shipyard (The Netherlands)
BUILT/DELIVERED: 2022 (July)
NAVAL DESIGN: Van Oossanen Naval Architects
HULL: Fast Displacement, Aluminum
LENGTH OVERALL: 118.1 ft / 36 m
LENGTH WATERLINE: 109.6 ft / 33.41 m
BEAM: 26.2 ft / 8 m
DRAFT: 6.5 ft / 1.98 m (light ship)
DISPLACEMENT: Approx. 218 tons
ENGINES: (2) 1150 hp Caterpillar C18 2300 RPM
CRUISING SPEED: 12 knots (max. 17 knots)
RANGE: 3,400 nautical miles (transatlantic)
STABILIZERS: CMC Zero Speed Fins &
SeaKeeper Gyro Stabilizers
GROSS TONS: 296 GT
FLAG: Cayman Islands (All Oceans REG Yacht Code)
VAT STATUS: VAT not paid; exported outside EU
CLASS: ABS A1, Commercial Yachting Service,
E, AMS (#YY281780)
LYING: Fort Lauderdale, FL, USA

FEATURES

Spacious full-beam master suite with signature skylights on main deck
Fold-out balcony to extend dining salon
Interior and exterior dining tables for 10
Large circular jacuzzi with surrounding bar seating on sun deck with panoramic views
Flybridge wet bar with fridge, grill, and hot/cold sink
Williams Dieseljet 6.25 m tender in special 'garage' with hull door

SALES NOTE

Not for sale or charter to US citizens in US waters.

EXCLUSIVE SALES CONTACT

Rupert Connor

rc@luxyachts.com

+1 954 205 0070

luxyachts.com

LUXURY *Yacht* GROUP

SOLEMATES

The 118 ft motor yacht Solemates was built by Mulder Shipyard in 2022. Constructed on a fast displacement aluminum hull with a 26.2 ft beam, she offers a sleek silhouette and spacious accommodations, with a total volume of 296 GT.

Exterior

Her elegant lines and straight bow enhance both performance and interior volume. The expansive 'two-and-a-half deck' design maximizes exterior space for relaxation and entertaining. Guests can enjoy the spacious main aft deck and luxurious sun deck with a spa pool, bar, and retractable TV. The beach club, garage with Williams 625 tender, and large swim platform make enjoying water activities a breeze.

Interior

Solemates' interior combines a rich blend of oak and teak. The open-plan main deck integrates living and dining areas, complete with a sit-at bar and balcony for alfresco dining. Advanced technology includes iPad-controlled entertainment, air conditioning, and blind position settings.

Accommodation

Accommodating 10 guests in 5 luxurious cabins, including a main-deck owner's suite, Solemates is designed for comfort and privacy. The convertible forward guest cabins ensure flexibility.

Performance

Powered by twin Caterpillar C18 engines, Solemates cruises comfortably at 12 knots, reaching a top speed of 17 knots. Her impressive range and robust design allow for extended transatlantic voyages and unrestricted navigation while meeting the highest safety standards.



LUXURY
Yacht
GROUP



LUXURY
Yacht
GROUP



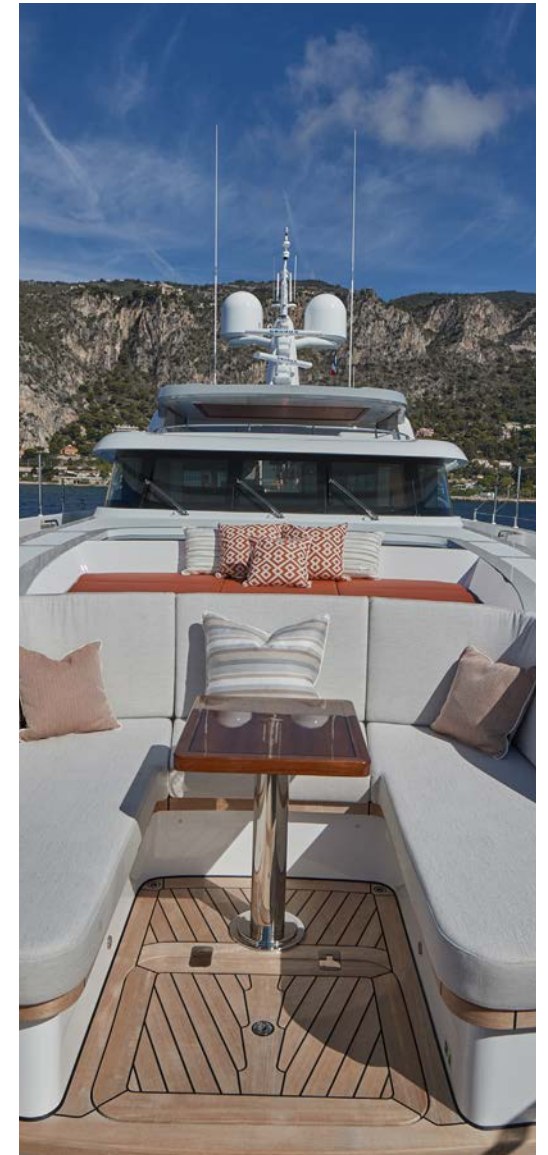
LUXURY
Yacht
GROUP



LUXURY
Yacht
GROUP



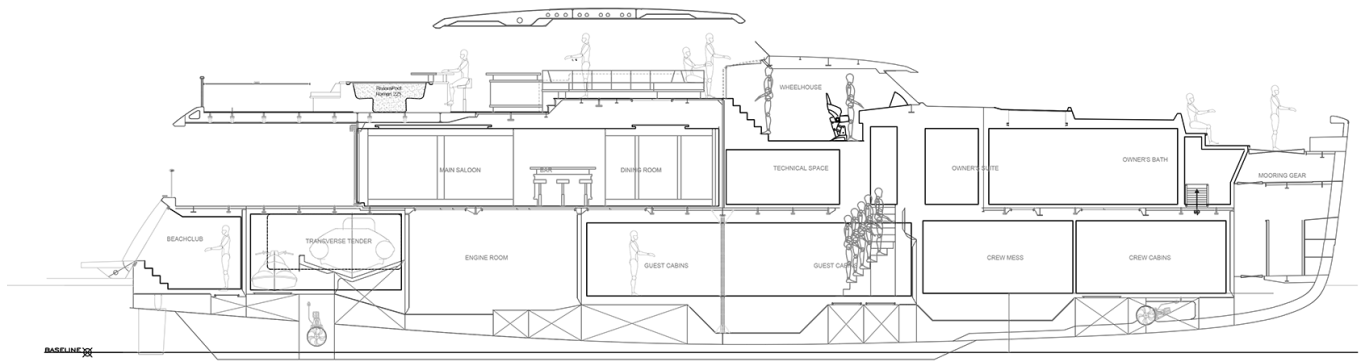
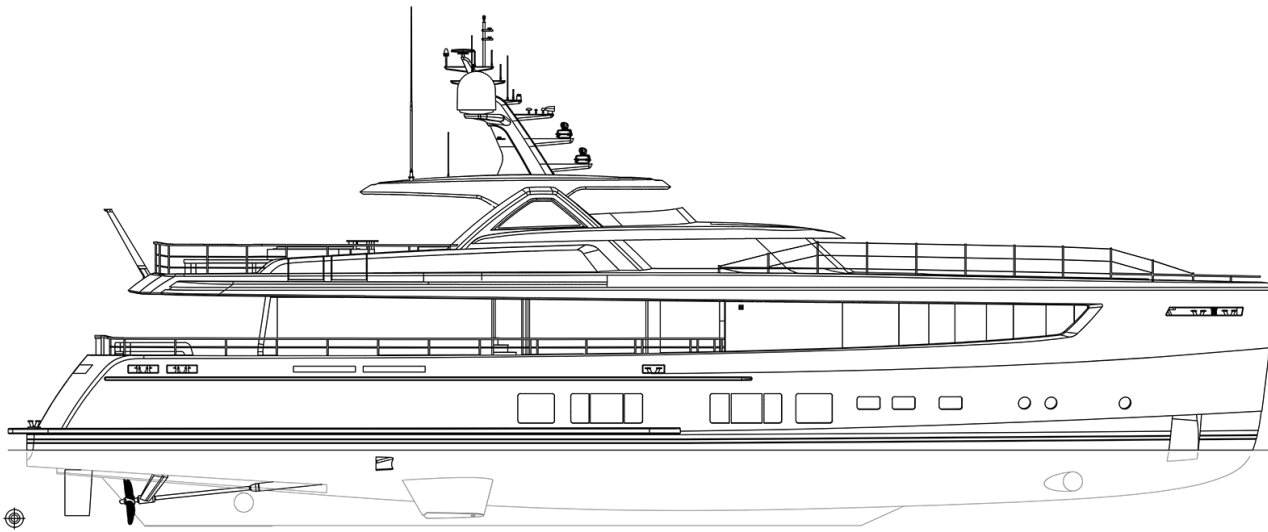
LUXURY
Yacht
GROUP



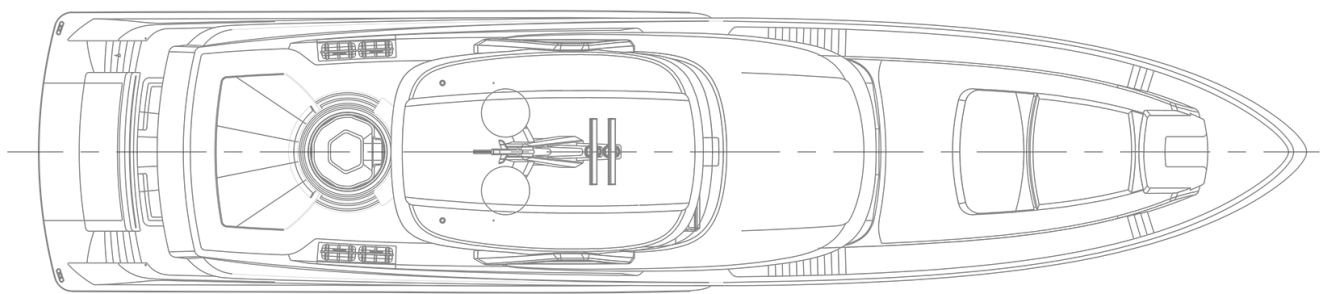
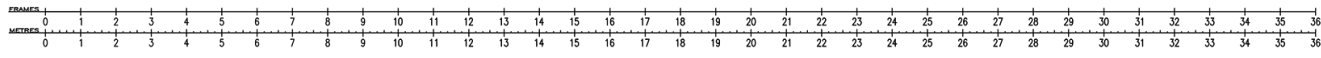
LUXURY
Yacht
GROUP



LUXURY
Yacht
GROUP
LAYOUT

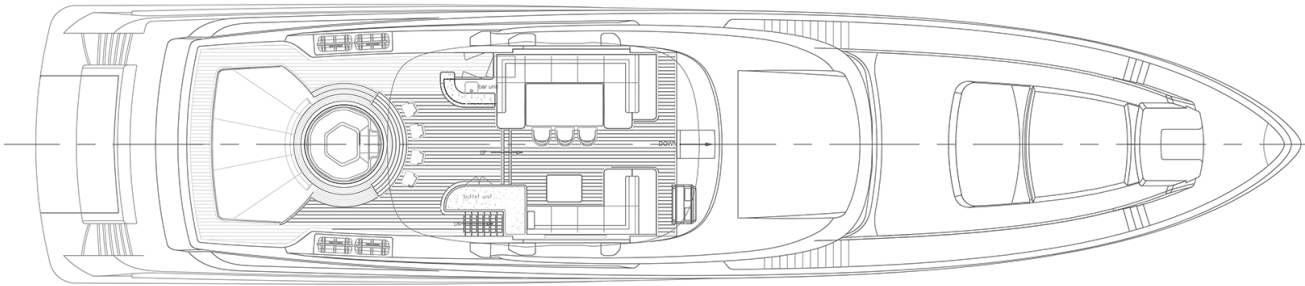


LONGITUDINAL SECTION

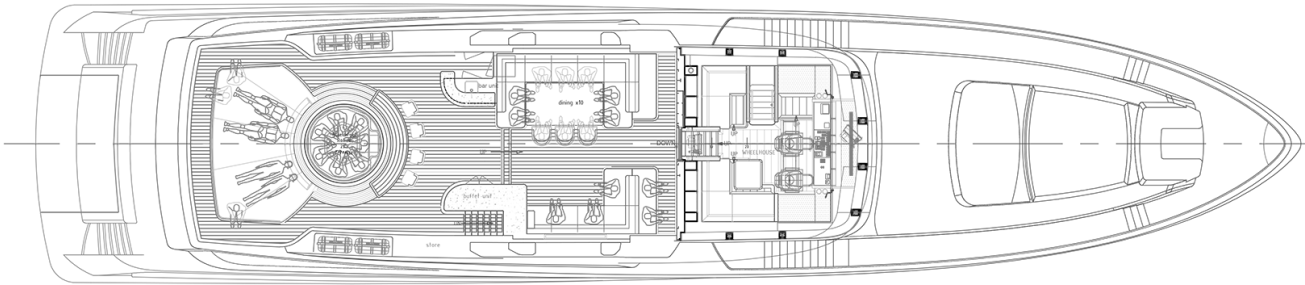


BIMINI

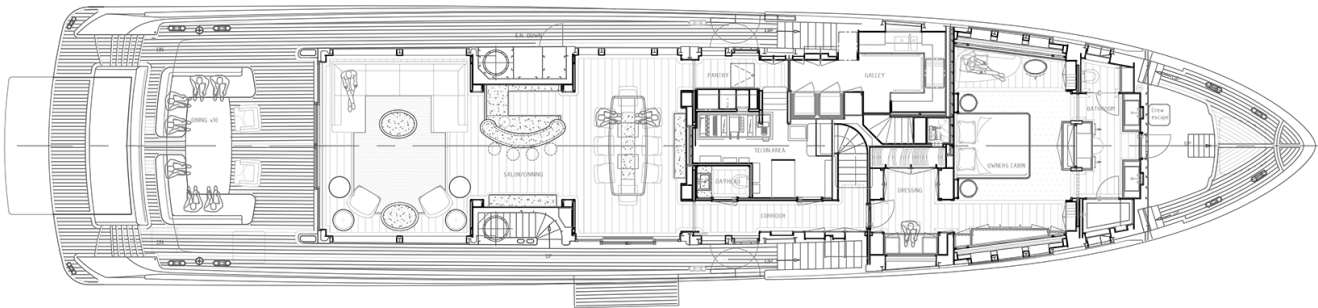
LUXURY
Yacht
GROUP
LAYOUT



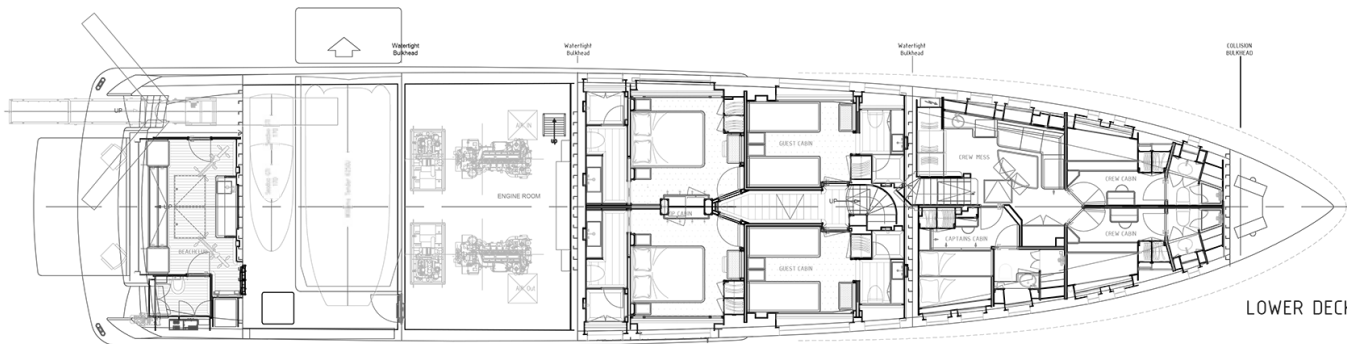
SUNDECK



WHEELHOUSE



MAIN DECK



LOWER DECK

GENERAL SPECIFICATIONS

TYPE	Motor Yacht
YEAR BUILT	2022
BUILDER	Mulder Shipyard
HULL	Fast Displacement, Aluminum
FLAG	Cayman Islands (All Oceans REG Yacht Code)
DIMENSIONS	Length Overall: 36 m (118.1 ft) Length Waterline: 33.41 m (109.6 ft) Beam: 8 m (26.2 ft) Draft at SLL: ±1.98 m (6.5 ft) Depth Moulded: ±3.83 m (12.6 ft)
TONNAGE	Gross: ±296 GT Displacement: ±218 tons (Summer Load Line)
NAVAL ARCHITECT	Van Oossanen Naval Architects
CONSTRUCTION	Hull & Superstructure: Aluminum
VESSEL TYPE	Round-bilged, fast displacement hull with watertight bulkheads
CLASSIFICATION	ABS A1, Commercial Yachting Service, E, AMS (#YY281780)

MACHINERY

MAIN ENGINES	(2) 1150 hp Caterpillar C18 @ 2300 RPM With remote and local control 24 V starting system
ENGINE HOURS (March 2025)	Port: 2131 hours Starboard: 2129 hours
PROPULSION	Twin propulsion connected to reduction gearboxes, straight drive, water lubricated stainless steel shafts driving fixed pitch propellers
GEAR BOXES	ZF, reduction ratio 4:1 with PTO & 130 cc hydraulic pumps
SHAFTS	Water lubricated system
PROPELLERS	Nibral bronze 5 bladed, type Skew Back, 1.350 mm dia.
SPEEDS	Cruising Speed: 12 knots Top Speed: 17 knots
FUEL CONSUMPTION	160L/hour at 12-13 knots
RANGE	±3,400 Nm (transatlantic, unrestricted)

TANK CAPACITIES

FUEL	±28,600 L
FRESH WATER	±5,700 L
GREY WATER	±2,600 L
BLACK WATER	±1,800 L
DIRTY OIL	±600 L
SLUDGE TANK	±500 L

AUXILIARY MACHINERY & ELECTRICAL SYSTEM

MAIN GENERATORS	(2) Zenoro John Deere generators 80 kWe output, 50 Hz, 1500 RPM
GENERATOR HOURS (March 2025)	Port: 4992 hours Starboard: 4272 hours
ELECTRICITY	European frequency parallel system, system voltage 230/400V-50 Hz with 80 kVA shore power converter
SHORE POWER CONVERTER	MarPower SPC-II Hybrid 80kW/100kVA at the aft ship
HARMONIC FILTER	Hyteps AHF 60A
BATTERIES	Battery set of 530Ah consisting of: (4) Victron Deep Cycle Gel 265 Ah (2) Battery charger Victron Skylla 24/50 TG (1) Earth fault measurement / alarm (1) Ampere measurement / alarm (1) Volt measurement / alarm

COMMUNICATION EQUIPMENT

INTERNET	Starlink
JOTRON	Tron TR30 x 2
VHF RADIO	Furuno
TELEPHONE	Panasonic
INMERSAT-C	Furuno Felcom-18

ANCILLARY EQUIPMENT

STEERING SYSTEM	Hydraulic cylinder between twin spade rudders
RUDDER ANGLE INDICATORS	In wheelhouse and flybridge
BOW & STERN THRUSTERS	Hydraulic 85 HP - Side Power Type SH 1000/513 TC
STABILIZERS	CMC Zero Speed Fins & SeaKeeper Gyro Stabilizers
FUEL FILTERS SEPARATOR	CC Jensen
BILGE PUMP	Gianneschi
FIRE PUMP	Gianneschi Emergency diesel fire pump
BOILERS	(2) 240 Liter 3kw 400-volt tanks
WATER MAKER	(2) HEM 25/1600 250 liters per hour
SEWAGE TREATMENT	Hamann
TOILETS	Planus for marine with pre- and flush touch panel Dayhead toilet powered by battery in case of black-out
AIR CONDITIONING	Marine Air MCW modular chiller
VENTILATION	Marine Air system, type AT24HVZ-2.5 Kw-MU
COMFORT CONTROLS	iPad Minis throughout control lighting, blinds, and HVAC

SAFETY & SECURITY EQUIPMENT

SAFETY	(4) 8-person self-inflating life rafts
FIRE FIGHTING	Eltek fire detection system connected to monitoring Hand-carried fire extinguishers in all guest cabins
ALARMS & MONITORING	Böning M&C network system running HMI software spread throughout yacht and connected via dedicated LAN
SECURITY	4 x IP fixed cameras in engine room 2 IP outdoor camera in the walk-a-ways 1 IP outdoor fixed camera forward on the mast 2 IP outdoor fixed cameras on the Bow (forward and down)

NAVIGATION EQUIPMENT

CONTROL STATIONS	Two fixed positions, one in wheelhouse, one on flybridge and one extra remote control. Wireless remote control which operates the gearboxes, bow thruster, and stern thruster
BRIDGE STATION	Schlegel, Quatron-Juwel Series IP65
AUTOMATIC PILOT	Simrad AP-70
LOG	Furuno
ECHO SOUNDER	Airmar DST800
RADARS	Furuno
CHART PLOTTER	Furuno
GPS	Furuno
WIND INSTRUMENTS	Furuno
AIS	Furuno FA-170
MAST	Intellian Vsat V80

DECK EQUIPMENT

ANCHORS	(2) 167kg SHHP Pool
WINDLASS	Maxwell type 6000 VWC with capstan, hydraulic
CHAINS	2 x galvanized U-2 (stud link) chains, 200 m length
MAIN DECK BALCONY	Hydraulic hinged balcony on main deck starboard, with teak floor and manual stainless steel fences
BOAT CRANE & DAVITS	Emergency davit (manual)
PASSERELLE	Hydromar hydraulic telescopic passerelle
SWIM PLATFORM	Teak, with port and starboard stairs to aft deck & shower
AWNINGS	Fabric sun awnings supported by carbon fiber poles
DECK MATERIAL	Best grade sawn Burma teak, 12 mm finished thickness

ACCOMMODATION

Accommodation for 10 guests in 5 cabins	
OWNER	(1) Owner cabin
GUESTS	(2) Double cabins + (2) Double/twin cabins
CREW	(3) Crew cabins for (6) crew members

FINISHES

WOOD FINISH	Open grain teak, matte varnished finish
WOODEN FLOORING	Oak planking in salon, wheelhouse, pantry, dining, and lobby
HANDRAILS	In all owner's and guest areas, stair handrails with stainless steel, and leather grips
ARTWORK & PERSONAL EFFECTS	Owner's artwork, décor and personal effects reserved

AUDIO/VISUAL ENTERTAINMENT SYSTEMS

THROUGHOUT VESSEL Qled Samsung TVs
Apple iPad Minis
Apple TV 4K
Nexgentec BT1 AES67 Bluetooth® Interface
Bowers & Wilkens CCM-362 in-ceiling speakers
Satellite receivers Vu+ UNO 4K SE UHDTV DVB-S2 FBC
HDMI wall inputs

TENDER & WATERSPORTS EQUIPMENT

TENDER 2020 Williams Dieseljet 625 rigid inflatable, 326 hours
(as of 3/2025), HIN: GB-WMRD4077D020,
marked 'T/T SOLEMATES'

WATERSPORTS 2022 SeaDoo personal watercraft, 29.3 hours
(as of 3/2025), HIN: CA-YDVA8816E222,
marked 'T/T SOLEMATES'

2022 SeaDoo personal watercraft, 29.9 hours
(as of 3/2025), HIN: CA-YDV39296L122,
marked 'T/T SOLEMATES'

DOMESTIC EQUIPMENT

MAIN GALLEY (1) induction hob with 5 burners, and sea rail fittings
(1) Extractor fan
(1) Built-in steam oven
(1) Built-in microwave
(1) Miele commercial dishwasher with short cycle
(2) Hot water machines (Quooker) (pantry + galley)
(1) Icemaker (pantry)
(1) Miele commercial dishwasher for glasses (pantry)
(1) Wine cooler (bar)
(2) 520-liter refrigerators (custom build, Frigomar)

GALLEY CREW (1) Extra freezer and cool capacity underneath the galley floor
(1) refrigerator
(1) microwave
(1) sink
(1) Miele non-commercial dishwasher for glasses



DISCOVER LUXURY

LUXURY *Yacht* GROUP

Luxury Yacht Group LLC

Sales • Charter • Management • Crew

+1 954 525 9959

www.luxyachts.com

101 SE 14th Street, Fort Lauderdale, FL 33316, USA

USA • Spain • France • New Zealand

Disclaimer

This is provided for informational purposes only and is not intended to be a binding offer or contract. All details are presented in good faith, but Luxury Yacht Group LLC makes no warranties or representations regarding the accuracy, completeness, or usefulness of the information and images contained herein. Yacht inventory, availability, specifications, features, locations, crew, charter prices and other details are subject to change without notice. Reproduction of any text or images found herein is prohibited without written consent from Luxury Yacht Group LLC. © Luxury Yacht Group 2025.