

LUXURY *Yacht* GROUP

MOCA



# MOCA

**Length:** 63.53 metres (208' 5")

**Beam:** 10.77 metres (35' 4")

**Draft:** 4.1 metres (13' 5")

**Number of Guests:** 12

**Number of Crew:** 15

**Built:** 2016

**Refit:** 2021

**Builder:** Benetti

**Naval Architect:** Azimut Benetti

**Flag:** Cayman Islands

**Hull Construction:** Steel

**Hull Configuration:** Displacement

Air conditioning, Deck Jacuzzi, Elevator/lift, Gym/exercise equipment, Stabilisers at anchor, Stabilisers underway, Wheelchair accessibility, WiFi connection on board

---

Offering guests an unforgettable charter experience, the contemporary and inviting interiors onboard the charter yacht MOCA are sure to put any guest at ease. With a touch of Asian aesthetics, the crisp and clean color palette offers the perfect combination of elegance, comfort, and style.

MOCA's impressive features strike the ideal balance between relaxation and entertainment. She features ample outdoor space for her charter guests to enjoy, including a state-of-the-art spa deck jacuzzi, with multiple sunbeds, lounging areas

and a widescreen TV on her upper deck. She also offers formal and informal airconditioned alfresco dining options on her main, upper and sun decks.

MOCA's splendid interior layout includes seven luxurious staterooms, comfortably accommodating 12 guests. Her guests will be looked after by a crew of 15, an exceptional crew to guest ratio, ensuring an enjoyable and relaxed onboard experience for guests.

At nearly 1,100 gross tonnes, MOCA was built for large families to comfortably enjoy this incredible superyacht anywhere worldwide. Providing stellar cruising and seakeeping capabilities, MOCA features zero-speed stabilizers and bow thruster. With a nautical range of 4,750 Nautical Miles at 12 knots, MOCA is perfect for cruising through the Bahamian hotspots.

# KEY FEATURES

- 1 • A modern beach-house decor coupled with hints of Asian aesthetics for a serene environment on board
- 2 • 7 lavish staterooms which uniquely features two VIP Suites on the Main Deck
- 3 • Spacious Master Suite solely located on the bridge deck for completion discretion
- 4 • Striking elevator serving the lower, main, bridge and sun decks
- 5 • Family-friendly yacht with 2 dedicated children's staterooms and a separate children's playroom
- 6 • Fully equipped air-conditioned technogym branded gym on the sun deck
- 7 • Spectacular bonus deck above the sun deck for further sun bathing and leisure time





MAIN AFT



MAIN AFT





MAIN SALON



MAIN BAR



GAMES TABLE



MAIN SALON





MAIN SALON



MAIN SALON



MAIN SALON



DINING ROOM





DINING ROOM



FOYER ELEVATOR



VIP SUITE - PORT SIDE



VIP SUITE - PORT SIDE



VIP ENSUITE



VIP SUITE - STARBOARD SIDE



VIP SUITE - STARBOARD SIDE



VIP ENSUITE





KING GUEST STATEROOM



GUEST ENSUITE



TWIN GUEST STATEROOM



TWIN GUEST STATEROOM



TRIPLE OCCUPANCY STATEROOM



TRIPLE OCCUPANCY STATEROOM



GUEST ENSUITE



BRIDGE





MASTER OFFICE



MASTER OFFICE



MASTER SUITE



MASTER SUITE



MASTER WALK-IN CLOSET



MASTER ENSUITE



MASTER ENSUITE



BRIDGE AFT / DINING AL FRESCO





BRIDGE AFT



BRIDGE AFT



BRIDGE AFT



SUN DECK





SUN DECK / JACUZZI



SUN DECK / JACUZZI



CHILDREN'S PLAYROOM / LOUNGE - SUN DECK

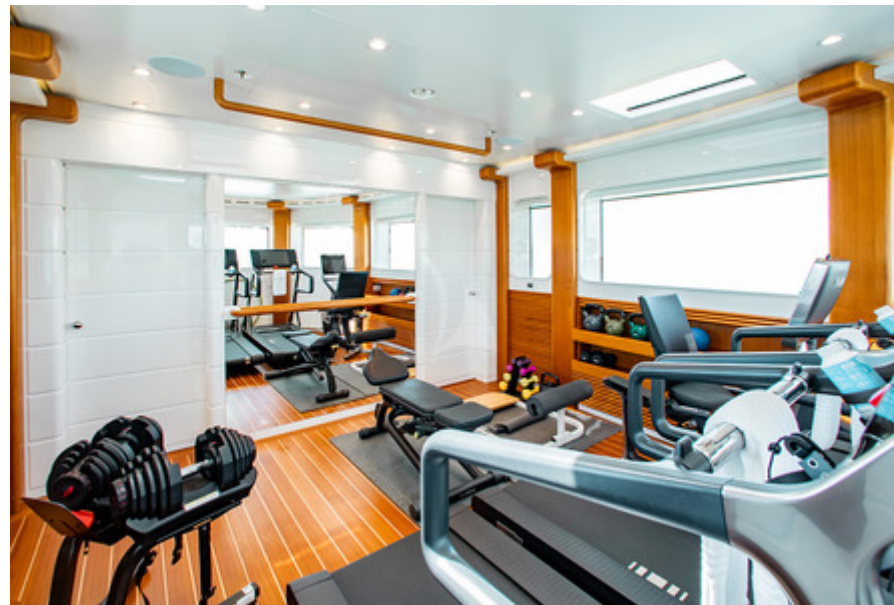


CHILDREN'S PLAYROOM / LOUNGE - SUN DECK





FULL GYM - SUN DECK



FULL GYM - SUN DECK



TOP DECK



TOP DECK

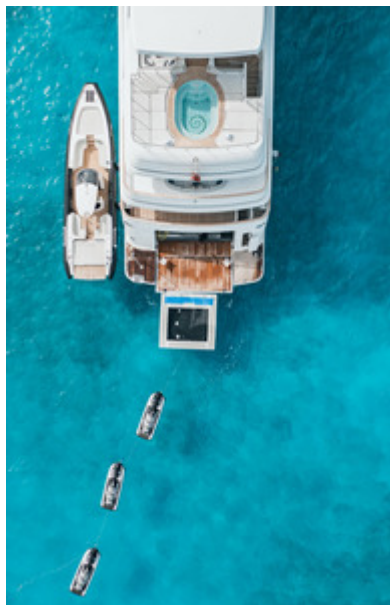




TOP DECK



BEACH CLUB & TOYS



BEACH CLUB



SWIM PLATFORM



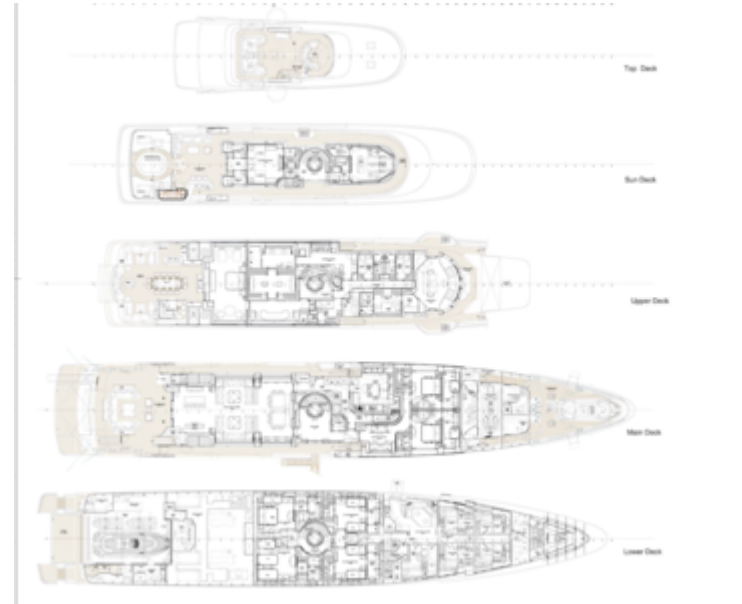


WATER TOYS



46ft TOWED TENDER





GA



# SPECIFICATIONS

## ACCOMMODATION

**Number of Guests:** 12

**Number of Cabins:** 7

**Cabin Configuration:** 4 Double, 2 Triple, 1 Twin

**Bed Configuration:** 4 King, 8 Single

## EQUIPMENT

**Engines:** • Engines MTU12V 4000M53

- Fuel tank capacity 115,000 l - 30,380 US gals
- Fresh water capacity 28,000 l - 5,283 US gals

• Cruising speed at 85% of maximum power at half load  
15 knots

• Main power system will be 380V AC 50Hz, 3ph for main equipment, and 220V AC 50Hz, 1 ph for small users. A 110V 60 Hz AC ring is provided for guest areas feeded by an ASEA 25kVA converter.

**Cruising Speed:** 15 knots

## WATERSPORTS

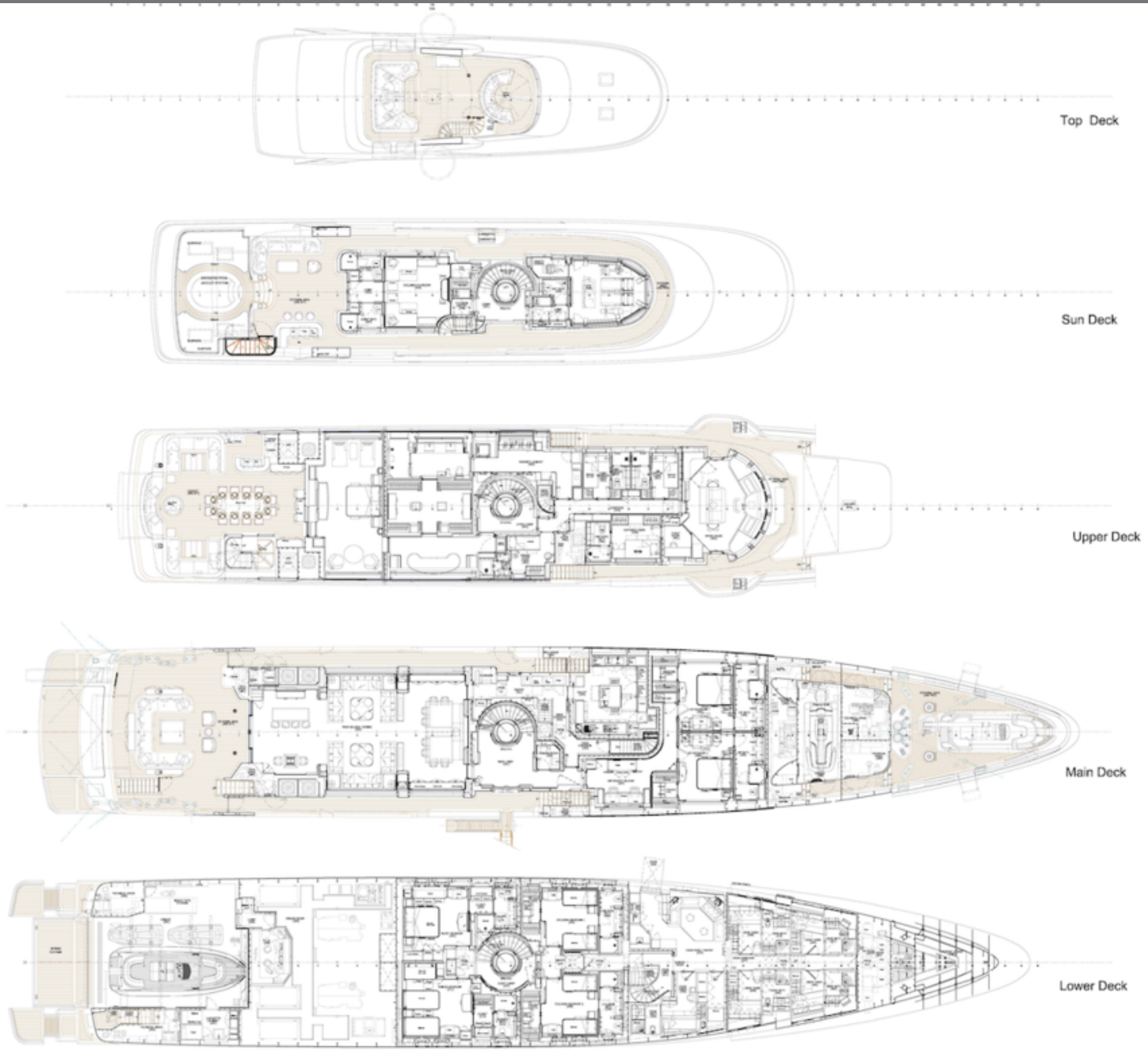
**Tenders + Toys:** Tender

- 2021 Intrepid 407 SE
- 27.4ft (8.34m) Castoldi JT27
- 13.9ft (4.25m) Rescue tender; Castoldi JT14RB

**Water Toys**

- 3 x Yamaha Jet Skis
- 2 x Paddle Boards
- 4 x Kayaks (2 x single and 2 x double)
- Wakeboard
- Water skis (various sizes)
- Snorkel Gear
- Inflatable Pool with 15x15ft critter net
- Inflatable tubes for towing
- 8 seat Fiesta Island with cooler
- Beach Set Up (i.e. table, tiki torches, chairs, etc.)
- Beach toys: Frisbees, water guns, soccer ball, beach tennis
- Fishing Equipment: 2x casting rods; 2x trawling rods; 2x Hawaiian slings

# LAYOUT





# LUXURY *Yacht* GROUP

Luxury Yacht Group LLC  
1362 SE 17th Street  
United States, Fort Lauderdale, 33316  
Tel: +19545259959  
Fax: +19545259949  
charter@luxyachts.com  
www.luxyachts.com

## **Disclaimer**

This document is not contractual. All specifications are given in good faith and offered for informational purposes only. The publisher and company do not warrant or assume any legal liability or responsibility for the accuracy, completeness, or usefulness of any information and/or images displayed. Yacht inventory, specifications and charter prices are subject to change without prior notice. None of the text and/or images used in this brochure may be reproduced without written consent from the publisher.