

LUXURY *Yacht* GROUP

AQUANOVA



AQUANOVA

Length: 45.72 metres (150' 0")

Beam: 8.53 metres (28' 0")

Draft: 1.8 metres (6' 0")

Number of Guests: 10

Number of Crew: 8

Built: 2007

Refit: 2021

Builder: Palmer Johnson

Naval Architect: Palmer Johnson

Hull Construction: Aluminium

Hull Configuration: Semi displacement

Air conditioning, Deck Jacuzzi, Gym/exercise equipment,
Stabilisers at anchor, WiFi connection on board

Key Features

- 1 Epitome of performance and relaxation
- 2 Fantastic charter layout comprises of a king, two queens and two twin cabins
- 3 Stellar crew all under the command of Guy McClave
- 4 Great water toy inventory to include a 32' Pursuit, sea pool and many more
- 5 This 150' PJ is a 160' in disguise – tremendous deck space
- 6 Welcoming main salon with bar that opens up to the aft deck – ideal for entertaining
- 7 Shallow draft allows for the perfect island-hopping yachting holiday



Aquanova at Sunset Anchor



Aft Deck Seating



Aft Deck Dining



Swim Platform



Beach Club



Fly Bridge Bar



VIP Cabin Bathroom



Master Stateroom, Forward Below Deck



Master Closet



Master Vanity



Master shower Dual Entry His and Hers



Twin Cabin 1 Lower deck Mid Ship



Twin Cabin 2 Lower deck Mid Ship



Twin Bathroom



Starboard VIP Lower Deck Aft



VIP Bathroom with Shower



Media Room, Main Deck Forward of Main Salon



Master Bathroom with Shower and Tub



Twin Bathroom



Main Salon 3



Main Salon 2



Main Salon 1



Pilot House



Bow



Main Salon by Night



Jacuzzi by Night



Master Desk



Master Desk



Lower Deck Cabins Hallway



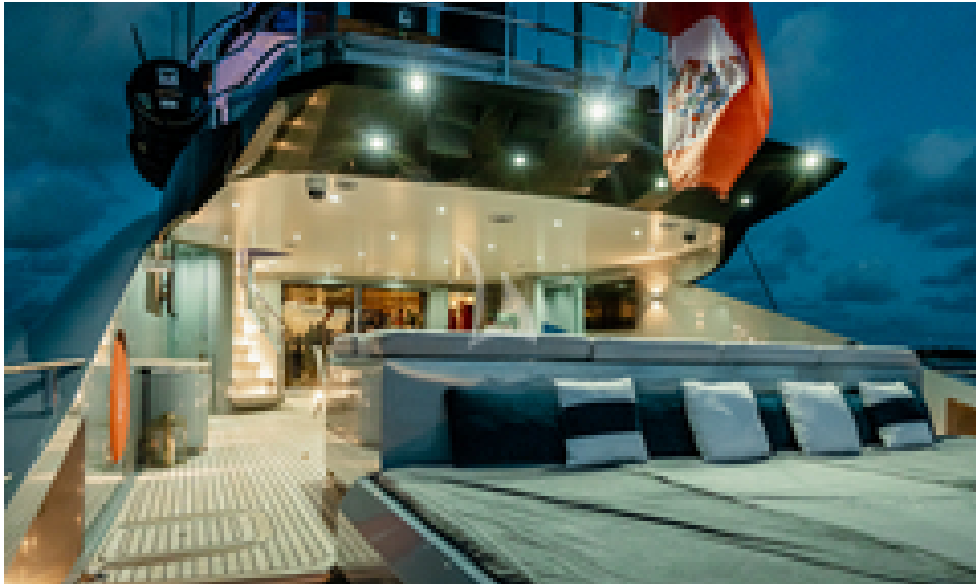
Twin Cabin, Pullman on Wall



Port VIP Lower Deck Aft



Main Salon Dining



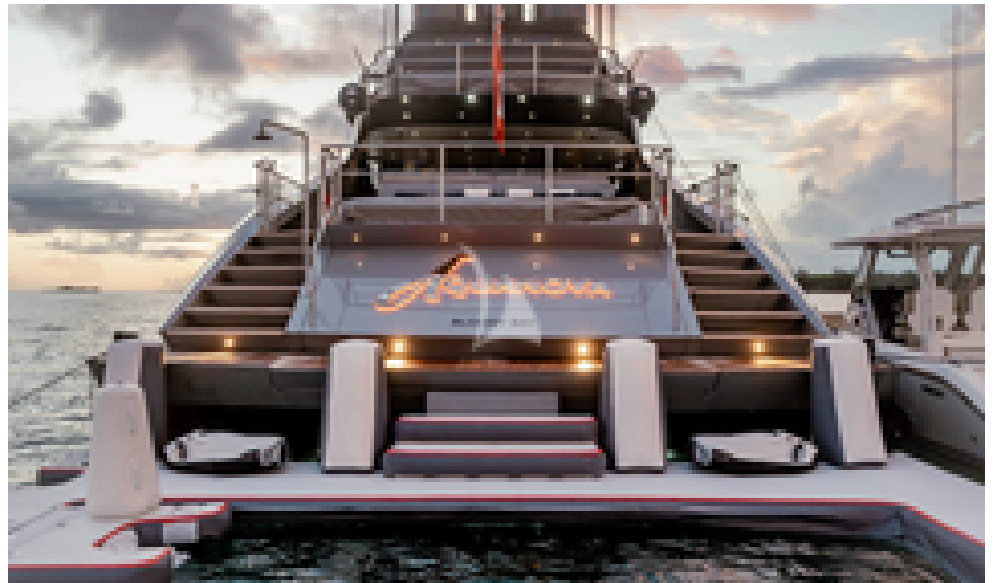
Aft Deck by Night



Aquanova



Jet Ski's



Aquanova Awaits You



Fly Bridge Bar By Night



Fly Bridge By Night



Aquanova at Anchor



Running shot

SPECIFICATIONS

ACCOMMODATION

Number of guests: 10

Number of cabins: 7

Cabin configuration: 3 Double Cabins, 2 Twin Cabins, 2 Convertible Cabins

Bed configuration: 1 Pullman Beds, 1 King Beds, 2 Queen Beds, 4 Single Beds

EQUIPMENT

Engines: Economical use: 13-14 knots | 80gph Fast cruise: 18 knots | 130gph Top Speed: 22 knots | 330gph 2 X MTU 16V4000 AQUANOVA is equipped with 2 Seakeeper gyro stabilizers

Cruising Speed: 14 knots

Fuel Consumption: 80 US US Gall/Hr

WATERSPORTS

Tender + Toys: 32' Pursuit w/300hp 2 Yamaha engines (not available in the Med)

14' Williams tender

2 Waverunner

2 Seabobs

1 2 x person kayak

1 Wakeboard

Water skis

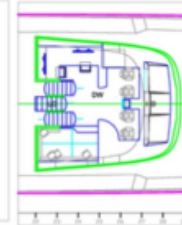
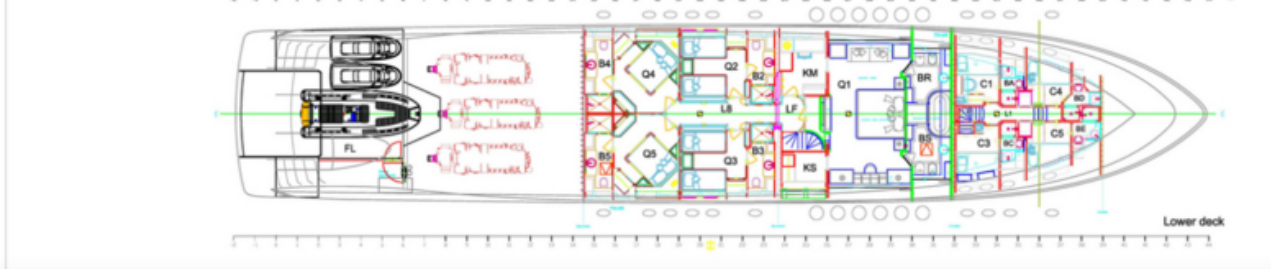
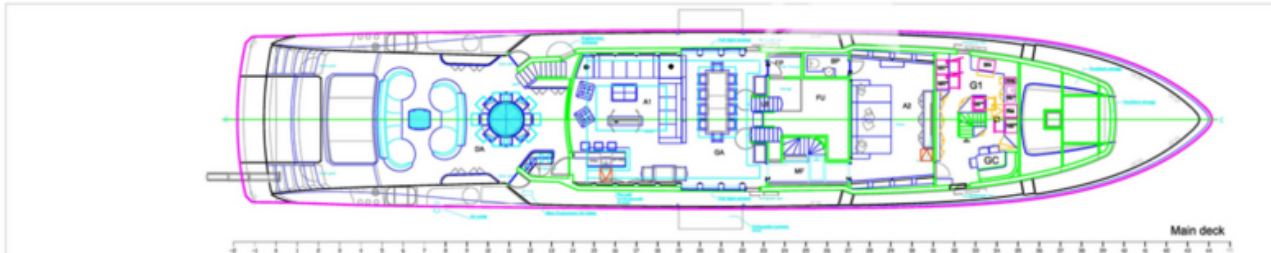
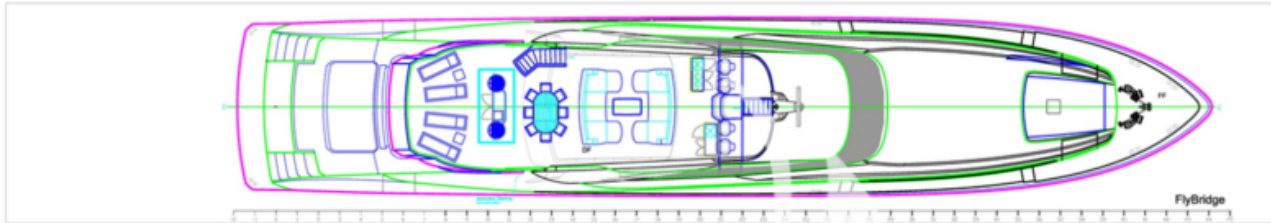
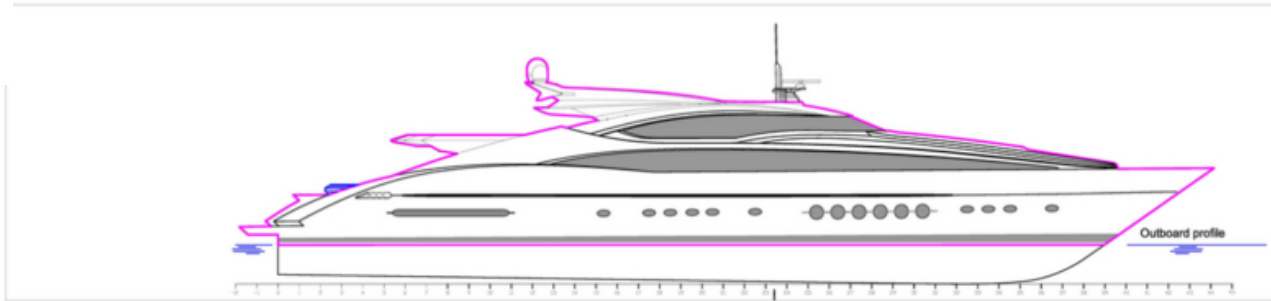
Snorkel gear

20x20 sea pool with sun loungers

Big game fishing equipment

Peloton bike

LAYOUT



NOTES

THIS GENERAL ARRANGEMENT DRAWING IS FOR GENERAL LAYOUT PURPOSES ONLY AND IS UPDATED AS DRAWINGS ARE RELEASED - THIS DRAWING IS NOT FOR CONSTRUCTION PURPOSES.

REFERENCE INDIVIDUAL ROOM DRAWINGS FOR CONSTRUCTION DETAILS.

REV	DATE	BY	CHKD	REVISIONS	APPROVED
A	13-08-18	PL	JW	FIRST RELEASE	JW
B				REVIEW	JW
C				SAVE	JW

DISTRIBUTION:

OWNER	✓	DESIGN	✓
ENGINEER	✓	CONTRACT	✓
YACHT	✓	ORDER	✓
PLANT	✓	PLAN	✓
OTHER	✓	PLAN	✓

PALMER JOHNSON Yachts

PJ243

180 FT / 48.7 M SUPER SPORT YACHT

GENERAL ARRANGEMENT (UPDATED)

DATE: 13-08-18

SCALE: 1/8" = 1'-0"

1 OF 1

04-13-18

LUXURY *Yacht* GROUP

Luxury Yacht Group LLC

United States, Fort Lauderdale, 33316

Tel: +19545259959

Fax: +19545259949

charter@luxyachts.com

www.luxyachts.com

Disclaimer

This document is not contractual. All specifications are given in good faith and offered for informational purposes only. The publisher and company do not warrant or assume any legal liability or responsibility for the accuracy, completeness, or usefulness of any information and/or images displayed. Yacht inventory, specifications and charter prices are subject to change without prior notice. None of the text and/or images used in this brochure may be reproduced without written consent from the publisher.