

LUXURY *Yacht* GROUP

LIQUID SKY



LIQUID SKY

Length: 47.00 metres (154' 2")

Beam: 8.90 metres (29' 2")

Draft: 3.1 metres (10' 1")

Number of Guests: 12

Number of Crew: 9

Built: 2017

Builder: CMB Yachts

Naval Architect: CMB Yachts

Flag: Cayman Islands

Hull Construction: GRP

Hull Configuration: Displacement

Air conditioning, Approved RYA water sports centre, Deck

Jacuzzi, Gym/exercise equipment, Stabilisers at anchor,

Stabilisers underway, WiFi connection on board

be converted in to a massage spa, 28m / 92' long sun deck with jacuzzi pool, 180° fully open sky lounge with balconies, and a beach club on the swim platform. Liquid Sky's interior and exterior space offers an ideal environment for events.

Arguably the best all-round 47m on the charter market, Liquid Sky is an impeccable, elegant yacht designed by the renowned Espen Oeino. Her modern, comfortable interior offers a remarkably unique and well laid out, spacious environment, with state-of-the-art entertainment and music systems.

With a maximum of 12 guests sleeping in 5 en-suite cabins, she has a highly appointed, decorated interior featuring oak wood, bronze, corian and light tone fabrics.

Added to this, a professionally equipped gym, which can also



Aerial Aft Decks View



Aerial Stbd View



External Aft View



Aerial View



Stern View



Balcony



Aft Deck



Sun Deck Pool View



Sky Lounge Deck



Sun Deck Lounge Night



Sbd Side View



Sun Deck Seating



Sun Deck Loungers



Outside Dining



Aft Deck Seating



Aft Deck Soft Seating



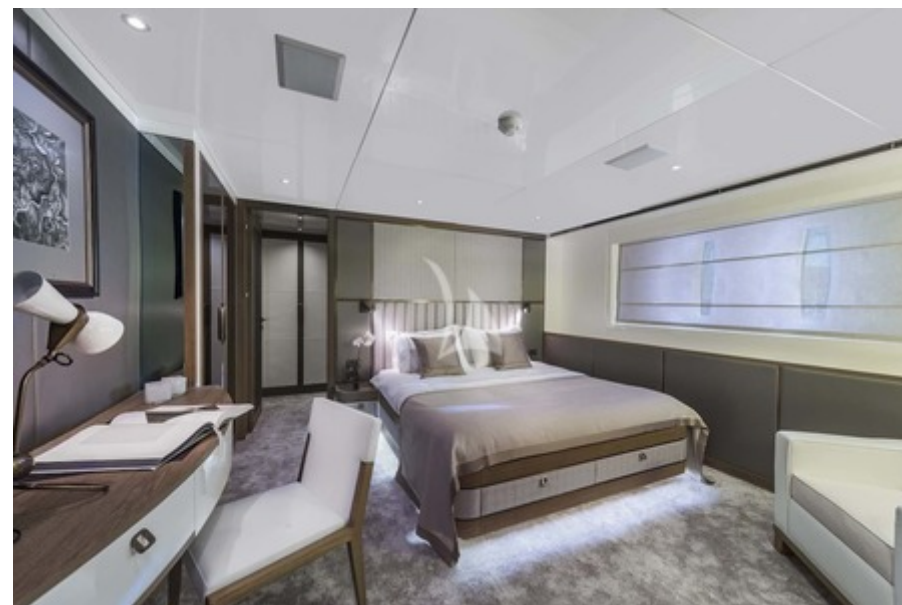
VIP Cabin Bathroom



Main Salon



Sky Lounge



VIP Cabin 1



VIP Cabin 2



Master Cabin



Main Salon



Main Salon Bar



VIP Bathroom



Sky Lounge



Lower Deck Cabins



Master Cabin



Bridge



Master Office



Interior Dining



Twin Cabin 2



Gym - Massage Room



Twin Cabin 1



Twin Cabin Bathroom



VIP Cabin 2



Aerial Port View



Layout

SPECIFICATIONS

ACCOMMODATION

Number of Guests: 12

Number of Cabins: 5

Cabin Configuration: 3 Double, 2 Twin

Bed Configuration: 2 Pullman, 1 King, 2 Queen, 6 Single

EQUIPMENT

Engines: 2 X CAT C32 Acert 1,450 HP

Generators:

2 X KOHLER 70KW

1 X KOHLER 50KW

Cruising Speed: 11 knots

Fuel Consumption: 390 Litres/Hr

WATERSPORTS

Tenders + Toys: 1 x Castoldi 19 FM (6m)

1 x Novurania Deluxe 400DL (13.1' / 4m)

1 x Wave-runner Seadoo Spark

1 x Stand-up Jetski Kawasaki

2 x Seabobs F5S (with camera integrated) 2 x SUP

Paddle Boards

2 x Kayaks

1 x Donut

1 x Banana

Water Skis

Wake Board

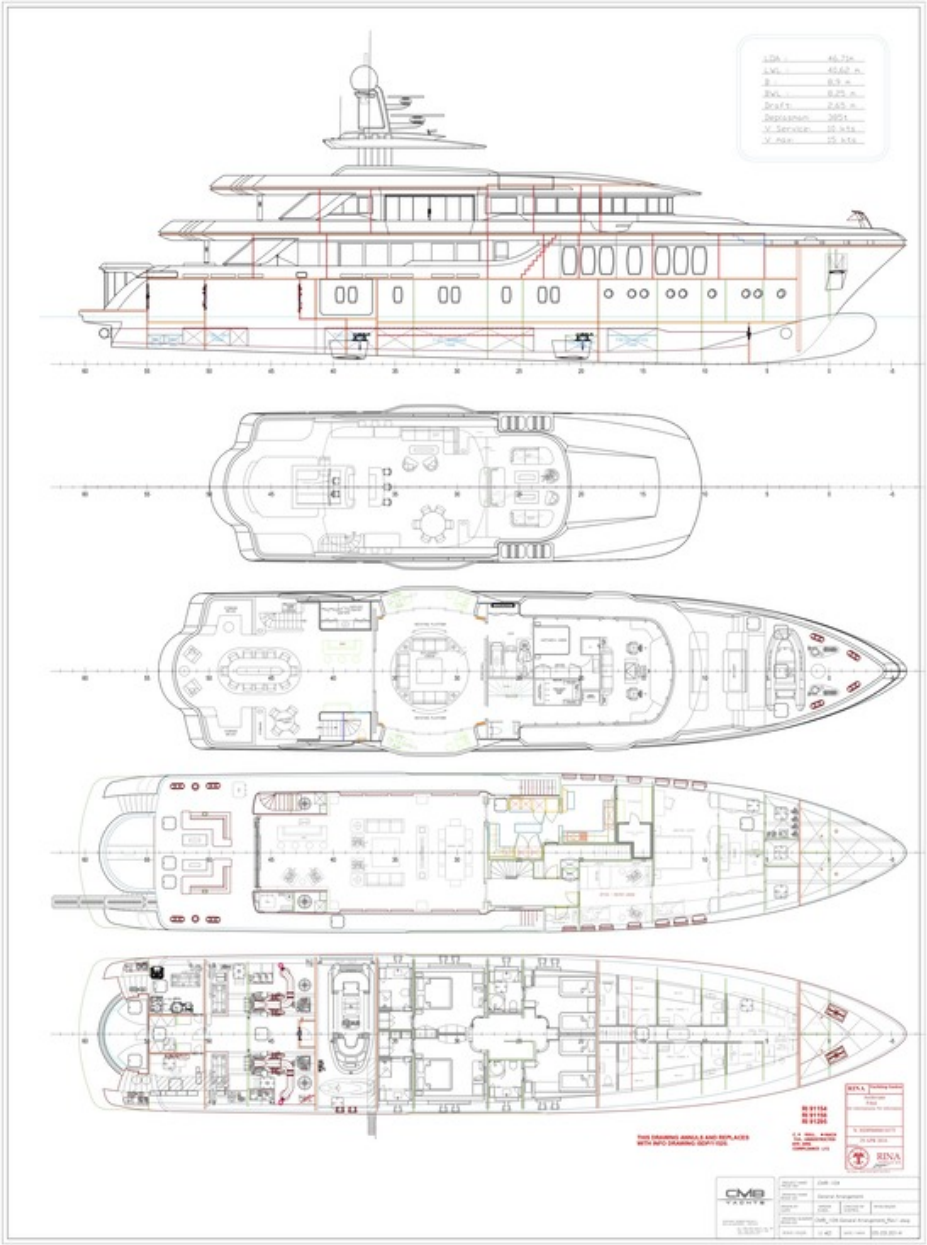
Snorkel equipment

Fishing equipment

Full gym equipment

2 x full diving sets. * Rendezvous diving only

LAYOUT



LUXURY *Yacht* GROUP

Luxury Yacht Group LLC
1362 SE 17th Street
United States, Fort Lauderdale, 33316
Tel: +19545259959
Fax: +19545259949
charter@luxyachts.com
www.luxyachts.com

Disclaimer

This document is not contractual. All specifications are given in good faith and offered for informational purposes only. The publisher and company do not warrant or assume any legal liability or responsibility for the accuracy, completeness, or usefulness of any information and/or images displayed. Yacht inventory, specifications and charter prices are subject to change without prior notice. None of the text and/or images used in this brochure may be reproduced without written consent from the publisher.