



FAVOR

Classic Comfort Meets Modern Relaxation

CHARTER LOCATIONS

BAHAMAS

SPECIFICATIONS

BUILDER: Crescent Custom Yachts

BUILT/LAUNCHED: 2000

REFIT: 2024

NAVAL DESIGN: Jack Sarin

HULL: Semi Displacement Composite

LENGTH OVERALL: 37.62 m

BEAM: 7.26 m

DRAFT: 1.68 m

ENGINES: Inboard Motor F.R.P. 2685

CRUISING SPEED: 11 knots

MAX SPEED: 15 knots

RANGE: 1,800 nautical miles

STABILIZERS: Naiad Fins (No Stabilizers at Anchor)

GROSS TONS: 282

ACCOMMODATIONS

GUESTS: Sleeps: 8, Cruises: 10

GUEST CABINS: 5

1 Master, 1 VIP, 2 Double, 1 Convertible

BEDS: 6

Master King, VIP King, 2 Queens,

2 Twins convert to King

WATER SPORTS AND RECREATION

Favor offers timeless, understated sophistication

Abundant social spaces throughout create unlimited entertainment opportunities

Enjoy sunsets from the new jacuzzi on the upper deck

A beautiful spiral staircase elegantly connects three levels

The sky lounge offers a wet bar, day head, and 360° views

CHARTER RATE

\$95,000 per week, plus expenses



37.62 m LENGTH



1.68 m DRAFT



8/10 GUESTS



5 CABINS



6 CREW

Favor blends timeless elegance with unparalleled comfort, offering a truly unique experience.

As you step aboard, you'll be greeted by a spacious main salon and dining area, thoughtfully designed with an open and uncluttered layout. This inviting space offers comfortable seating for intimate gatherings while easily accommodating larger social events. Moving forward, an impressive spiral staircase elegantly connects three levels, linking the lower deck accommodations, main deck, pilothouse, and sky lounge.

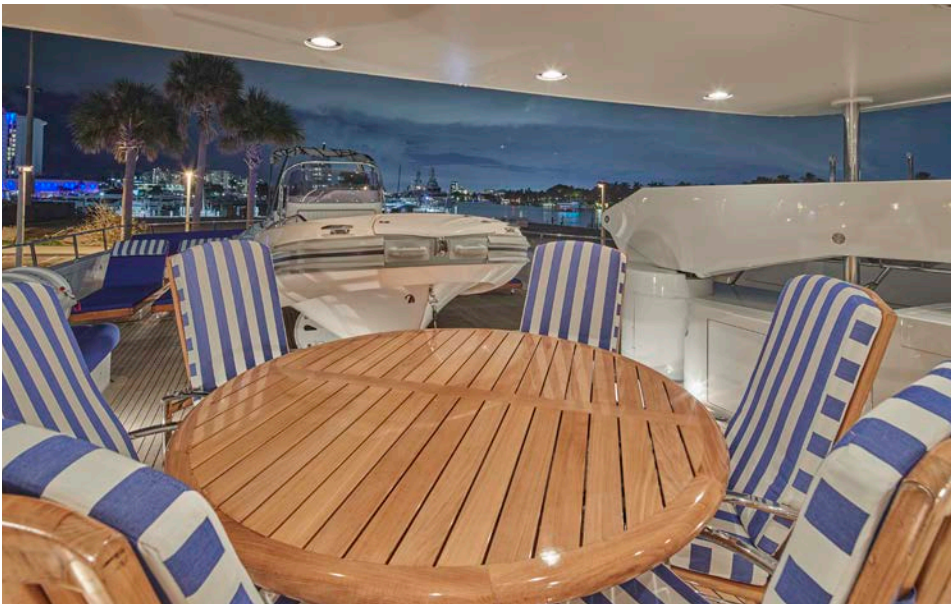
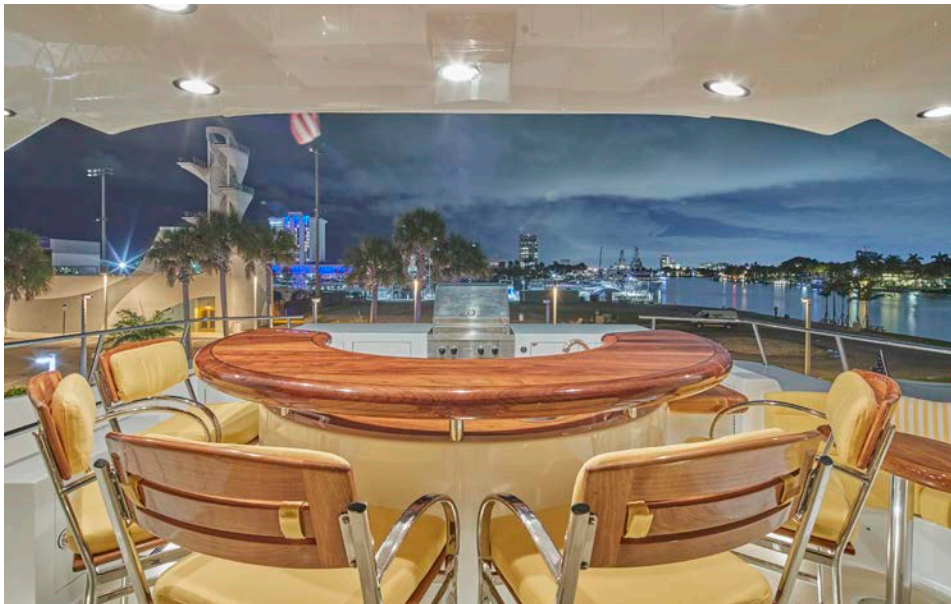
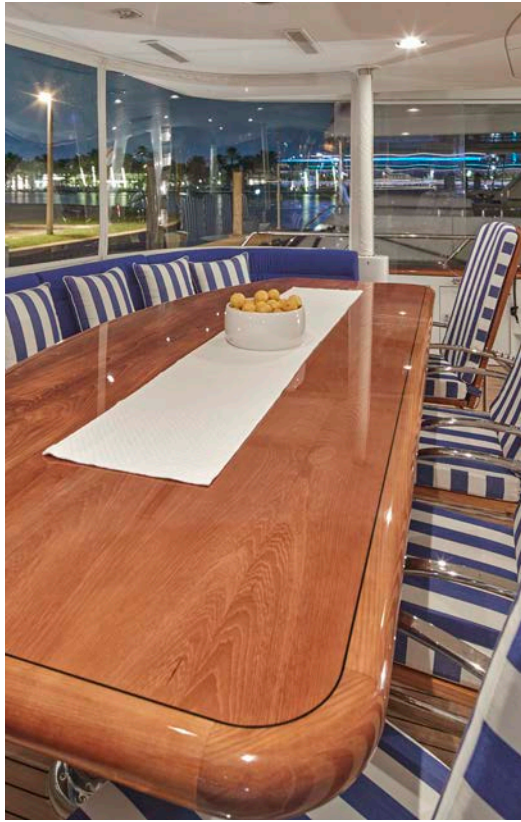
At the top of the staircase, the sky lounge offers a refined retreat with a low wet bar, a day head, and 360-degree views ensuring a seamless balance of relaxation and functionality. Aft of the sky lounge is an open deck featuring a 19' ZAR tender and additional seating. The 'conversation pit' forward of the pilothouse seats six around a circular table with excellent views over the bow.

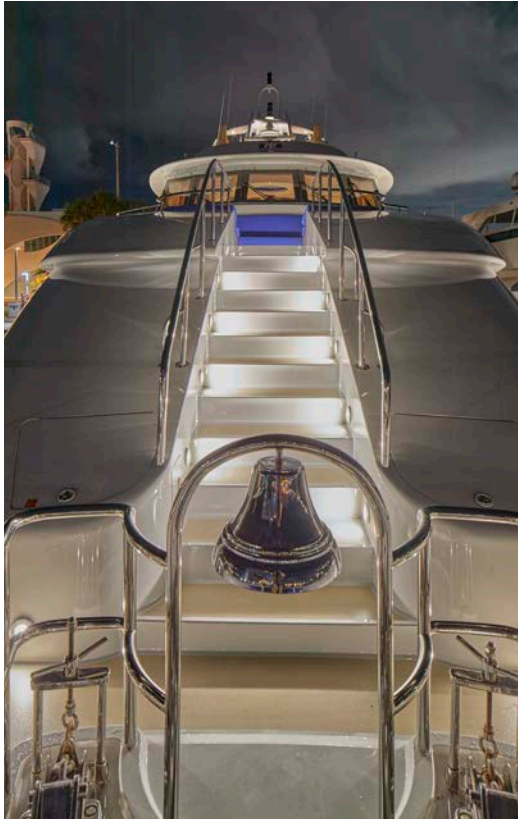
The flybridge offers abundant seating, a bar, and a grill, making it the perfect spot for alfresco dining or enjoying the breeze. Partially shaded by an integrated canopy, this area is a guest favorite.

The forward master suite is exceptionally spacious, spanning two decks and the full beam of the yacht. On the main deck, it features a luxurious king bed, a vanity, a private day head to port, and a comfortable settee to starboard. Forward, a pair of spiral stairs leads to a lower-level spa-inspired bath, creating a serene retreat.

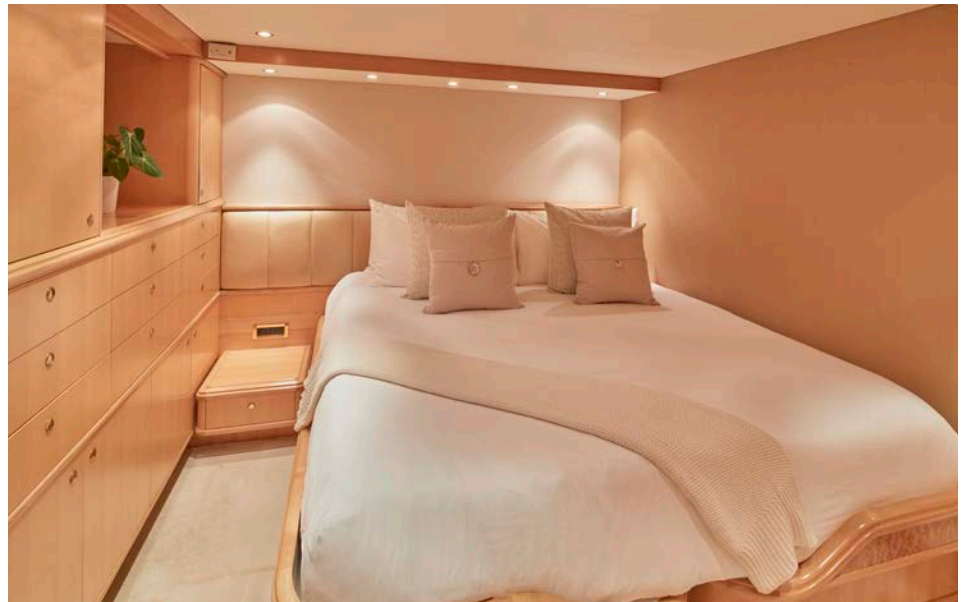
The guest accommodations, situated between the master suite and the engine room, include one VIP stateroom with a king bed, two guest staterooms with queen beds, and one stateroom with twin beds that convert to a king. Every stateroom offers a private en-suite head and shower, ensuring comfort and privacy for all guests.

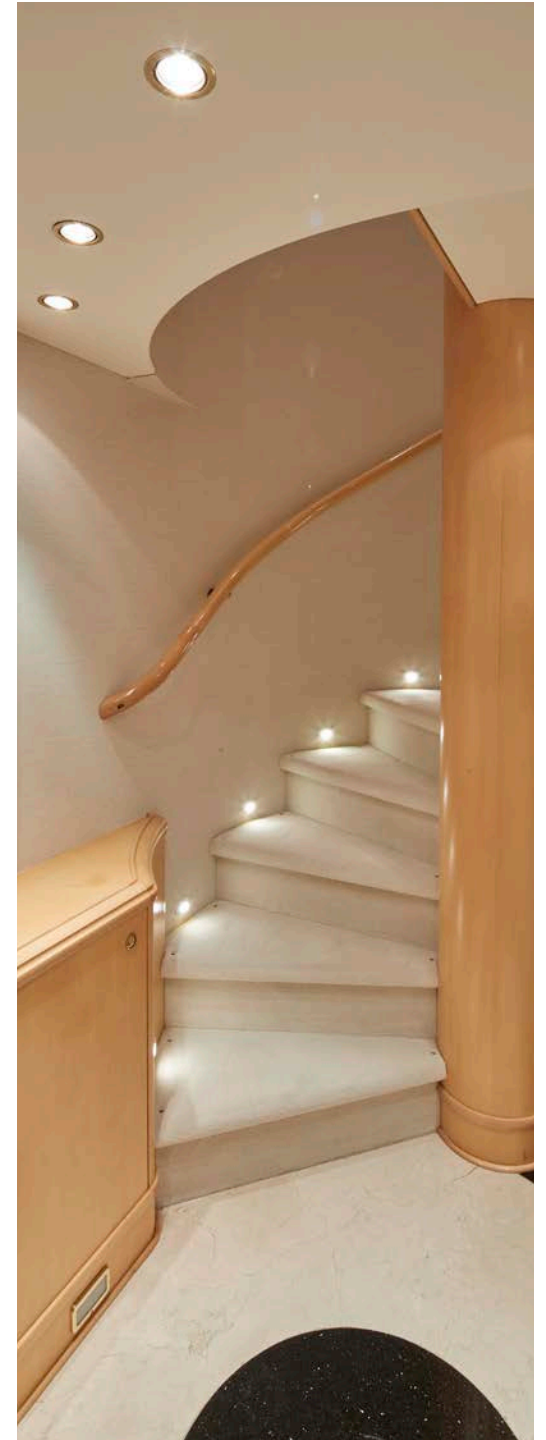


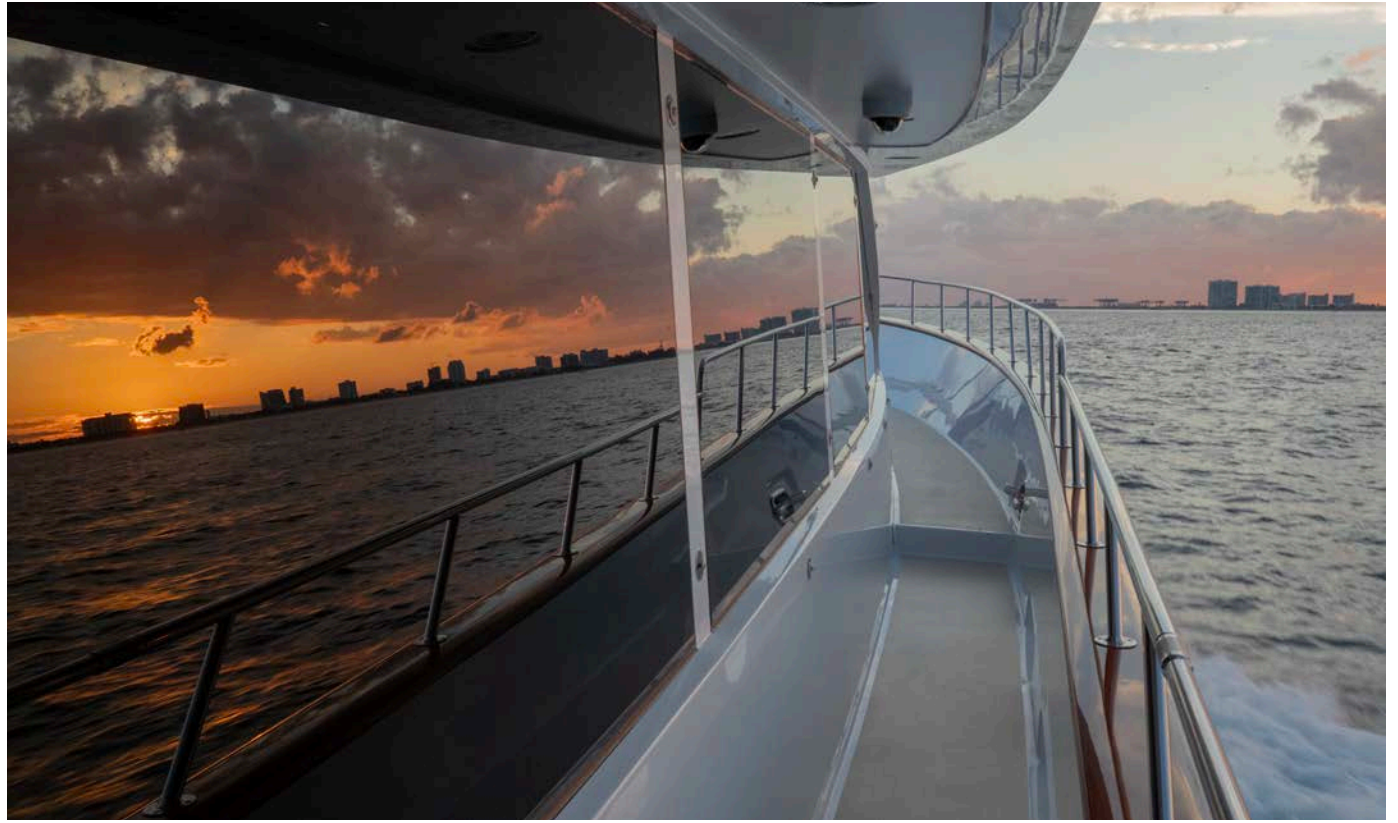
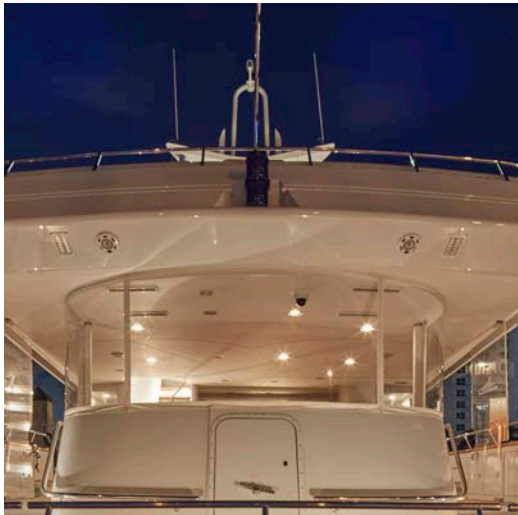






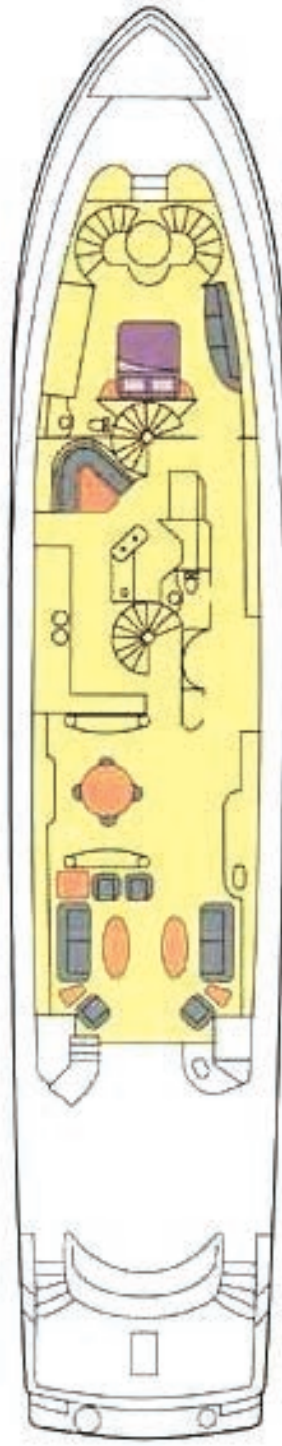




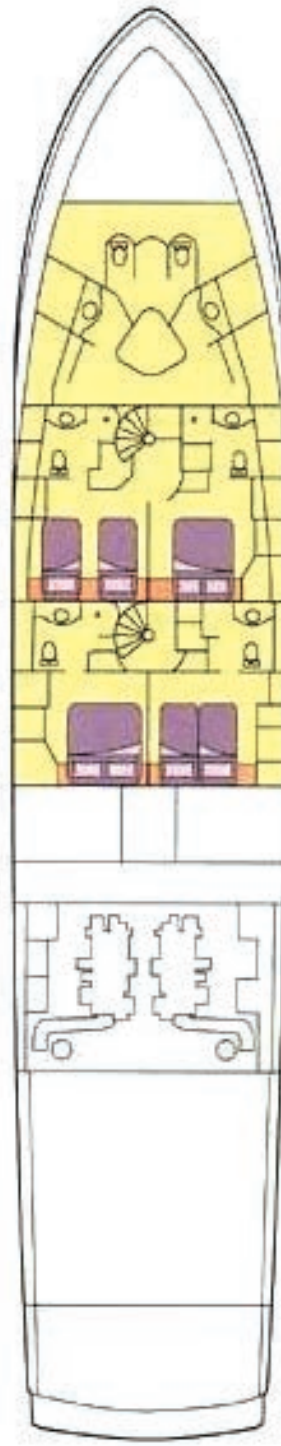




UPPER DECK



MAIN DECK



LOWER DECK



Please contact your
charter broker for inquiries.

Disclaimer

This is provided for informational purposes only and is not intended to be a binding offer or contract. All details are presented in good faith, but Luxury Yacht Group LLC makes no warranties or representations regarding the accuracy, completeness, or usefulness of the information and images contained herein. Yacht inventory, availability, specifications, features, locations, crew, charter prices and other details are subject to change without notice. Reproduction of any text or images found herein is prohibited without written consent from Luxury Yacht Group LLC. © Luxury Yacht Group 2024.