

LUXURY *Yacht* GROUP

BOLD



BOLD

Length: 85.30 metres (279' 10")

Beam: 11.00 metres (36' 1")

Draft: 2.8 metres (9' 2")

Number of Guests: 12

Number of Crew: 20

Built: 2019

Builder: Silver Yachts

Naval Architect: Espen Oeino

Flag: Marshall Islands

Hull Construction: Aluminium

Hull Configuration: Semi displacement

Air conditioning, Deck Jacuzzi, Gym/exercise equipment, Helipad, Stabilisers at anchor, Stabilisers underway, WiFi connection on board

Fastest Explorer Yacht worldwide, certified Helicopter operations with a Leonardo AW 109S, large tenders for excursions and adventures, floating dock for kitesurfing, on board Disco, sun deck jacuzzi, huge 300 m2 loft and wintergarden.

BOLD is the fifth largest and most recent Superyacht built by Australia's premier luxury yacht builder SilverYachts. She harnesses the world leading efficiency and technical supremacy defined by her predecessors.

Designed by renowned yacht designer Espen Oeino, BOLD reveals aggressive styling, expansive interior and exterior spaces.

SilverYacht's design team have created a sophisticated and luxurious interior with the practicalities and functionalities in mind to match the vessel's intended use. The contemporary interiors include teak and oak paneling, metallic painted features combined with oak and marble floors. The interior is defined by the expansive upper deck loft with floor to ceiling windows and open plan arrangement. This leads onto the large winter-garden with wraparound sliding glass panels and air conditioning, allowing the owner to entertain guests for indoor and outdoor dinner parties.

BOLD offers eight guest cabins comprising the Owner's suite, three VIP cabins, and four guest cabins. The Owner's suite includes a master cabin, his and hers ensuite and a private salon with direct access to exterior decks. Extensive use of exterior and interior glass extends the open style of the yacht to the Owner's suite.

KEY FEATURES

- 1 Fastest world explorer worldwide, with maximum speed of 23 knots, for fast positioning, low draft (2.8m) for access to shallow cruising grounds, unparalleled in yachts of her size
- 2 Large outdoor entertaining areas on various decks with bar and teppanyaki/ barbecue with generous seating and large scale 40,000+W sound system with integrated disco lighting
- 3 Expansive LOFT saloon, with floor to ceiling windows and open plan arrangement leading to the Wintergarden, of an combined area of 300m², with 6 x 3 meter mediascreen and up to 3.70m ceiling height
- 4 Air conditioned Wintergarden with a table for 18 guests, of which glass panel system can be fully opened for al fresco dining.
- 5 Large outdoor cinema on sundeck and integrated TV 6 x 3 meter media wall in LOFT and 5 x 2 meter LED screen in the combined Helihanger/ Gym and Yogaroom
- 6 Owner's suite with master cabin, his and hers ensuite (with hammam) and private salon with direct access to exterior decks
- 7 8 person sun deck Jacuzzi with hard cover and large sunpads and surrounded with glass for wind protection and more privacy
- 8 Multipurpose 400 m² teak maindeck with folding bulwarks to carry any kind of tenders and toys, with a 6 tonnes crane. Helihanger is gym and disco with integrated sound, media and lightsystem (VIP-Room). Certified Heli landing deck with 3.5 tonnes 12m D-value with flush lighting. Twin-engine fast Helicopter in addition available for charter: Leonardo AW 109 Grand



Cruising in Exumas



Cruising in Exumas



Profile



Cruising in Exumas



Cruising in Exumas



Cruising in Exumas



Cruising in Exumas



Heli Deck



Sun Deck Fwd



Sun Deck Fwd



Sun Deck Aft



Upper Deck Aft Dining



Upper Deck



Upper Deck Aft Dining



Owner's Deck Aft



Owner's Deck Main Saloon Dining



Owner's Deck Aft



Owner's Deck Main Saloon



Owner's Deck Main Saloon



Owner's Deck Main Saloon



Owner's Deck Main Saloon



Master Cabin



Master Cabin



Master Cabin



Master Cabin



VIP Cabin



Double Cabin



Bridge

SPECIFICATIONS

ACCOMMODATION

Number of Guests: 12

Number of Cabins: 8

Cabin Configuration: 8 Double

Bed Configuration: 1 King, 2 Queen, 5 Double

EQUIPMENT

Engines: - Main engines: 2 x MTU 16V 4000 M73L (2 x 2880 kW @ 2050rpm)

- Main generators: 2 x Zenoro, Scania (345kWe), 1 x Zenoro, Scania (245kWe)

- Stern thruster – fully retractable with partial Dynamic Position capability / heading control – 150kW

- Duel Bowthruster – upgraded performance and redundancy to 2 x 150kW

- Fuel capacity 150,000 Litres

- Potable water 41,500 Litres

Cruising Speed: 16 knots

Fuel Consumption: 371 Litres/Hr @12.3 knots, 548 Litres/Hr @14.6 knots, 1,267 Litres/Hr @20.3 knots
Litres/Hr

WATERSPORTS

Tenders + Toys: TENDERS:

- 1 x 10.5m centre console Rupert rib style tender – 440Hp
- 1 x 10.5m custom Rupert style tender with EO designed wheelhouse 440Hp
- 1 x R6 Rupert rib style tender – 220Hp

TOYS:

- 3 x 300Hp GTX LTD Seadoo Waverunners
- 2 x Laser sailing dinghies

- Floating Island
- Kite start base
- 1 x Seabob
- 2 x Laser Diving
- 2 x Transparent Kayaks
- 4 x Stand up paddle boards
- 6 x Surfboards
- 2 x Wake surfboards
- 4 x Wakeboards
- Water Skis
- Mono Skis
- 2 x Electric Foil Boards
- 2 x SUP Foil Boards
- 8 x Full sets of Kite Surfing gear - 12 different kites
- 6 x Full Sets of SCUBA
- Full offshore Game Fishing Kit

- 4 x Mountain Bikes
- 1 x Underwater drone

- 1 x Circus Tent to cover whole main deck
- 2 x Outdoor Disco Lasers

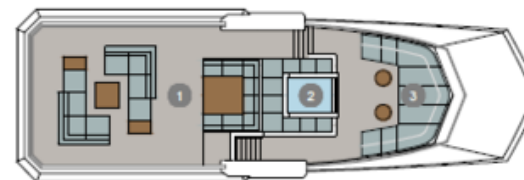
HELIPAD

- Fully certified commercial Heli pad.
Clients can bring their own, charter the yacht's (AgustaWestland AW109) charter another helicopter.

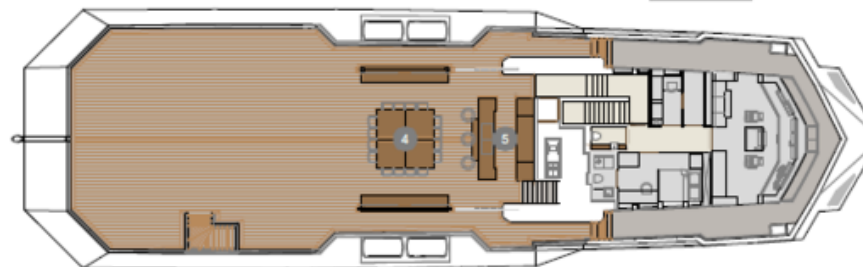


LAYOUT

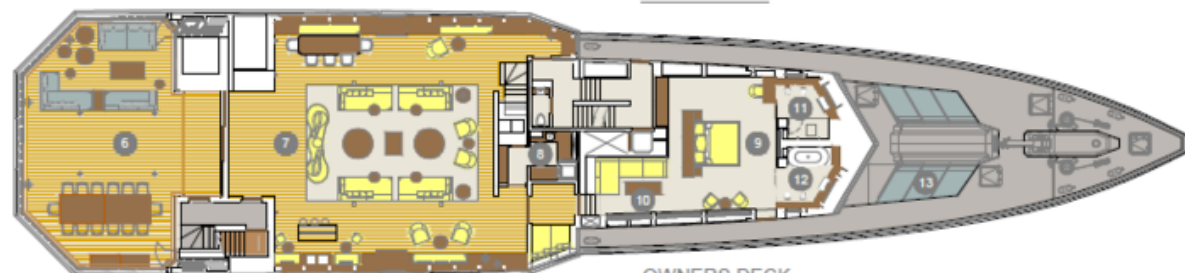
- ECK
- UNGE AND DINING
- 2 JACUZZI
- 3 FORWARD LOUNGE
- UPPER DECK
- 4 EXTERNAL DINING
- 5 EXTERNAL BAR
- OWNERS DECK
- 6 WINTERGARDEN
- 7 MAIN SALON/LOFT
- 8 PANTRY
- 9 OWNERS CABIN
- 10 OWNERS LOUNGE
- 11 HIS ENSUITE
- 12 HER ENSUITE
- 13 FOREDECK LOUNGE
- MAIN DECK
- 14 AFT BATHING/MARINA
- 15 HELIDECK AND GARAGE
- 16 GUEST CABIN 1
- 17 GUEST CABIN 2
- 18 GUEST CABIN 3
- 19 GUEST CABIN 4
- 20 VIP CABIN 3
- 21 VIP CABIN 1
- 22 VIP CABIN 2
- LOWER DECK
- 23 LAZARETTE



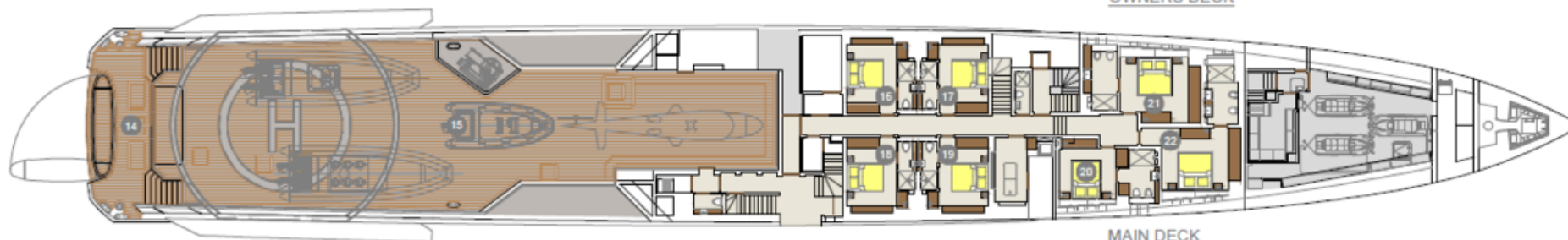
SUN DECK



UPPER DECK



OWNERS DECK



MAIN DECK



LOWER DECK

Full commercial Heli deck night rated.
Max heli weight is 3,600kg – so up to a EC145.
The rate is EUR 3.600 per hour.

LUXURY *Yacht* GROUP

Luxury Yacht Group LLC
1362 SE 17th Street
United States, Fort Lauderdale, 33316
Tel: +19545259959
Fax: +19545259949
charter@luxyachts.com
www.luxyachts.com

Disclaimer

This document is not contractual. All specifications are given in good faith and offered for informational purposes only. The publisher and company do not warrant or assume any legal liability or responsibility for the accuracy, completeness, or usefulness of any information and/or images displayed. Yacht inventory, specifications and charter prices are subject to change without prior notice. None of the text and/or images used in this brochure may be reproduced without written consent from the publisher.